

*Evaluating*

# BEEFMASTER

*Cattle*



**Beefmaster: Built for...**

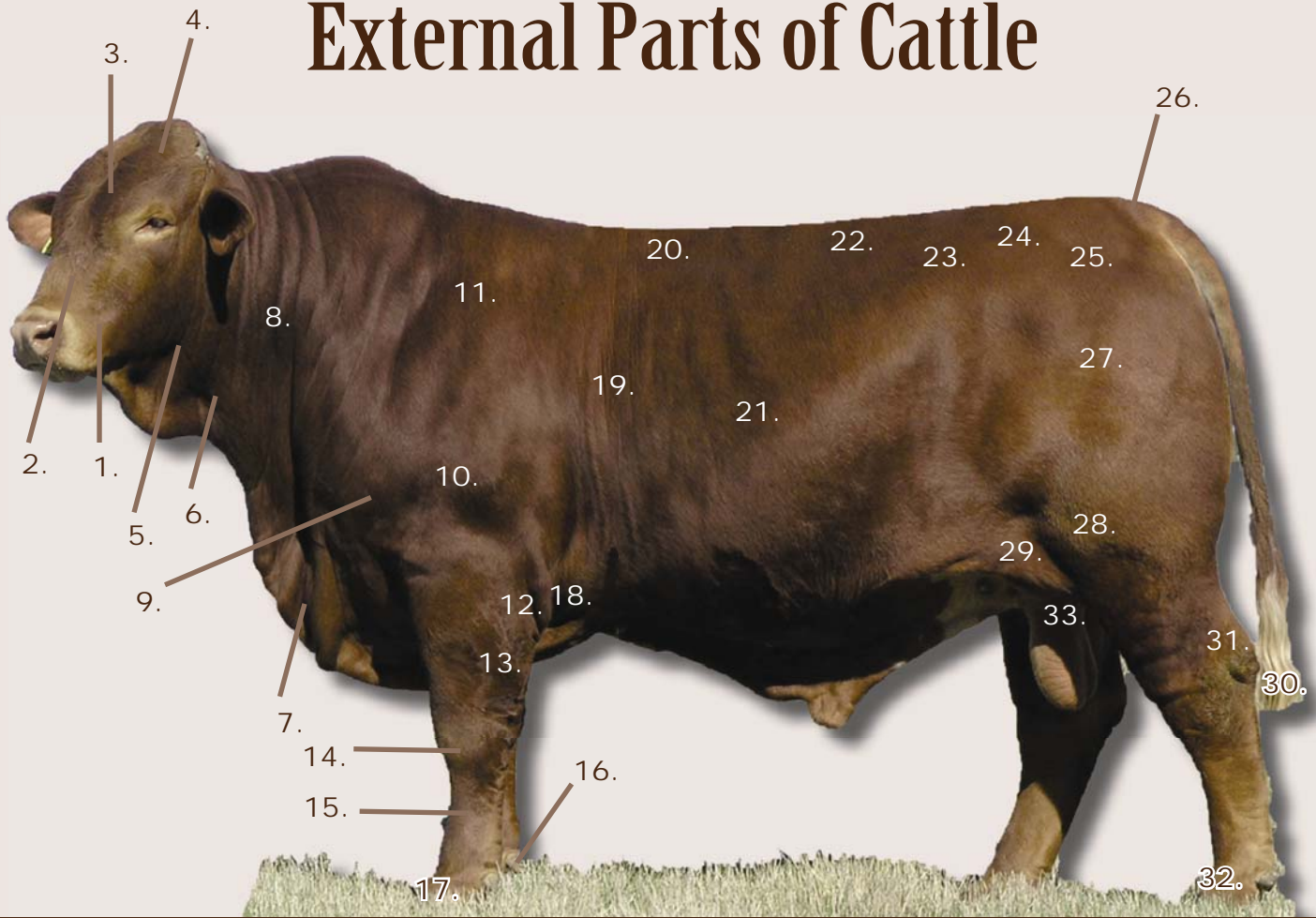
**Heterosis  
Adaptability  
Maternal Excellence  
Your Pay Check  
Your Future**



**Beefmaster Breeders United**  
118 W. Bandera Road, Boerne, TX 78006  
P: 210/732-3132 • F: 210/732-7711  
[www.beefmasters.org](http://www.beefmasters.org)

**BEEFMASTER**  
BREEDERS UNITED 

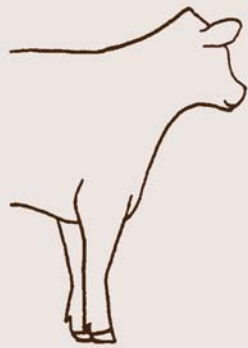
# External Parts of Cattle



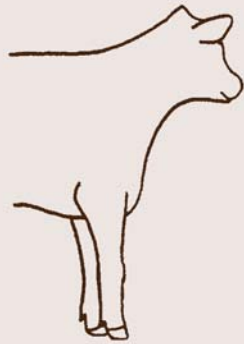
- |                      |                               |  |
|----------------------|-------------------------------|--|
| 1. Muzzle            | 12. Elbow                     | 23. Hook or Hip  |
| 2. Face              | 13. Forearm                   | 24. Rump   |
| 3. Forehead          | 14. Knee                      | 25. Pin Bone   |
| 4. Poll              | 15. Cannon                    | 26. Tailhead   |
| 5. Throat            | 16. Dewclaw                   | 27. Quarter  |
| 6. Dewlap            | 17. Hoof                      | 28. Stifle   |
| 7. Brisket           | 18. Lower Forerib, Fore Flank | 29. Rear Flank   |
| 8. Neck              | 19. Forerib                   | 30. Switch   |
| 9. Point of Shoulder | 20. Back or Top               | 31. Hock   |
| 10. Shoulder         | 21. Rib                       | 32. Pastern  |
| 11. Top of Shoulder  | 22. Loin                      | 33. Udder (Cow, Heifer)<br>Cod (Steer)<br>Scrotum (Bull) |

***A BBU Guide to Evaluating Cattle.***

# Feet & Leg Placement - Front Leg Set



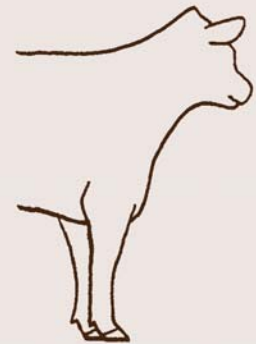
Correct



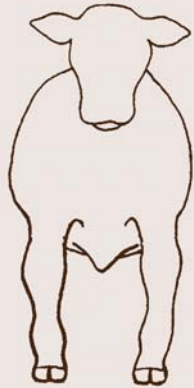
Over at the Knee  
(Buck Kneed)



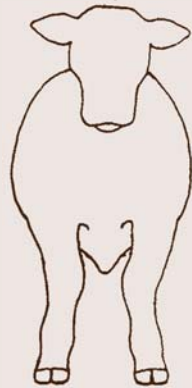
Back at the Knee  
(Calf Kneed)



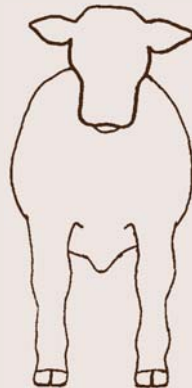
Weak Pasterns



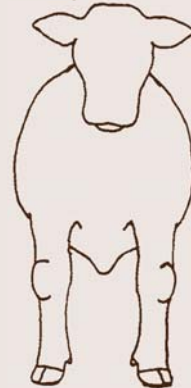
Bowlegged



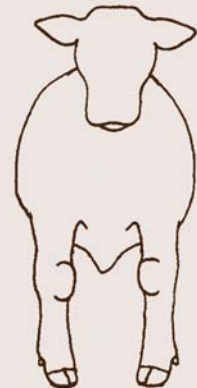
Knocked-Kneed



Correct



Splayfooted  
(Toed Out)



Pigeon-Toed  
(Toed In)

# Feet & Leg Placement - Rear Leg Set



Extremely Straight  
(Posty)



Correct



Extremely Curved  
(Sickled)



Bowlegged



Correct



Cow Hocked

*Feet & Leg Placement Diagrams provided by South Dakota State University's College of Agriculture & Biological Sciences Department of Animal & Range Sciences*

**Terminology for Cattle Evaluation On Next Page.**

# Terminology for Evaluating Cattle

## Advantages

### General

Stouter/Stouter Constructed; Nicer Balanced; Growthy/Growthier; Leveler Topped and Hipped; Eye Appealing; More Dimensional; and Cleaner Chested and Fronted

### Muscle

Heavier Muscled; Thicker Topped; Wider Tracking; Deeper Quartered; More Muscular Expression Loin/Rump/Stifle/Quarter; Wider Based; Squarer Hip; Squarer from Hooks to Pins; and Set Wider at Pins

### Structure

More Desirable Slope of Shoulder; More Angle to Shoulder; More Structurally Correct; Easier Moving; Freer on the Move; Squarer on Feet and Legs; More Athletic on the Move; More Flex off - Hocks/Pasterns/Both Ends; and Better Fills their Track on the Move

### Frame

Larger Framed; Smaller Framed; More Future Growth and Outcome; and Moderate Frame

### Volume & Capacity

Bolder/Wider Sprung - More Outwards Slope to Rib; More Spring of Fore Rib; Deeper Ribbed; Higher Volume; Deeper through Rear Rib of Flank; Wider Based; and Bigger Ribbed

### Condition

Easier Fleshing; Freer of Fat through the Lower 1/3; Trimmer through Brisket/Flank/Udder; More Desirable Condition; and Softer Appearing

---

## Breeding Cattle

### Heifers

More Feminine; More Feminine through her Head, Neck and Shoulder; Smoother Blending through her Front End; Blends Smoother from Shoulder to Fore Ribs; and Cleaner in Navel or Underline

### Bulls

More Masculine; Tighter Sheath; More Testicular Development; More Powerful; Stouter; More Desirable Scrotal Shape; and More Correct Angle to Underline

## Criticisms

### General

Needs More Size; Poorly Balanced; Lacks Growth; Weak Topped; Less Eye Appealing; Deep Chested; and High Flanked

### Muscle

Light Muscled; Narrow Topped; Narrow Tracking; Shallow Quartered; Narrows from Hooks to Pins; and Set Narrow at Pins

### Structure

Straight Shoulder; Structurally Incorrect; Restricted in Movement; Tight Hip; and Short Strided

### Frame

Smaller Framed; Larger Framed; and Lacks Growth, Less Outcome

### Volume & Capacity

Narrower Made; Flatter Ribbed; Less Volume; and Narrower Based

### Condition

Harder Fleshing; Wastier; Excessive Degree of Condition; Wasty through Brisket/Flank/Udder; and Less Condition

---

## Breeding Cattle

### Heifers

Coarse Fronted; Short Necked; Wastier Navel; Wasty Fronted; Round Shouldered; and Thicker Necked

### Bulls

Refined; Loose Sheath; Less Testicular Development; Twisted Testicle; Pendulous Sheath; Wastier Sheath; Finer Boned; Small Footed; and Short Necked